

卷扬减速机 Winch Drives



工程机械
卷扬减速机
Winch Drives
For Construction Machinery



卷扬减速机

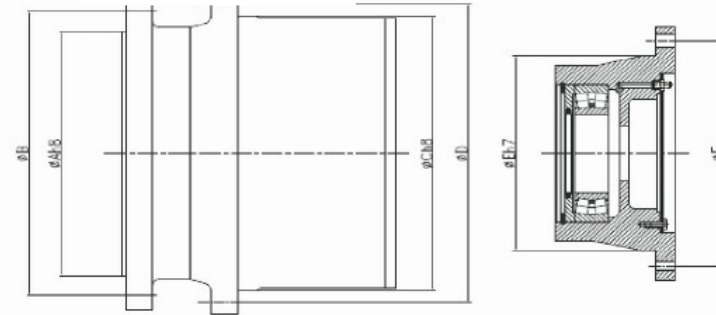
Winch Drives

应用范围:

各种汽车起重机、全路面起重机、
越野轮胎起重机、履带起重机、旋挖钻机
及其他机械的卷扬起升机构

Applications

Mobile cranes, all terrain cranes, rough
terrain cranes, crawler cranes, excavators
and other winch mechanism.



产品介绍 Special Features

卷扬减速机以其卓越的品质和性能，满足了各种条件、环境下使用，
其明显的优点表现在：Super quality and performance of winch drives are suitable for all kinds of applications

- | | | | |
|-------------------|------------|--------------|--------------------------------|
| Update Technology | · 引进国外先进技术 | · 模块化设计 | Modular Design |
| Micro Motion | · 产品微动性能好 | · 承载能力强、可靠性好 | High Load Capacity&Reliability |
| Compact Sturcture | · 结构紧凑 | · 维护简单 | Simple Maintenance |

株洲齿轮有限责任公司
ZHUZHOU GEAR CO., LTD.

ADD: No.119 Xinhua West Road, Zhuzhou, Hunan, China

电话: 0731-28496383

传真: 0731-28496358

Http://www.chinese-gear.com

型号	A	B	C	D	E	F	T2MAX	速比
ZFT13W	250	290	280	305	200	230	9500	16.27, 19.9, 22.62, 26.43, 32.14, 37.57, 45.42, 53.95
ZFT17W	250	290	280	305	200	230	14000	16.27, 19.9, 22.62, 26.43, 32.14, 37.57, 45.42, 53.95, 64.24, 70.24, 77.95, 89.22, 105.69, 121.93, 150.5, 170.24
ZFT23W	250	290	280	305	200	230	18000	18.56, 20.35, 22.66, 25.75, 30.06, 48.18
ZFT24W	250	290	280	305	200	230	19000	36.97, 44.7, 90.13, 102.6, 116.9, 120.5, 137.2, 173.7, 193.3, 209.3, 221.1, 137.6, 169.86
ZFT28W	250	290	320	350	200	230	18000	30.36, 36.8, 42.87, 50.52, 54.20, 62
ZFT34W	270	310	320	350	200	230	25000	30.36, 36.8, 42.87, 50.52, 54.20, 62
ZFT36W	270	310	320	350	200	230	28000	32.57, 38.43, 47.21, 66.96, 79.36, 87.78, 100.02, 116.55, 131, 138.82, 161.26, 269
ZFT40W	330	370	350	400	200	230	27000	35.88, 41.04, 48.28, 59.13
ZFT50W	270	310	350	400	200	230	37500	36.8, 45.13, 80, 87.59, 91.12, 99.75, 125.66, 146.39, 155.94, 177.48
ZFT60W	330	370	370	410	255	225	42500	33.03, 39.41, 63.77, 76.55, 86.46, 94.80, 105.53, 111.93, 119.93, 136, 139.86, 150.53, 169.89
ZFT80W	380	430	430	480	225	260	67000	61.28, 76.68, 79.15, 87.64, 98.97, 110.86, 126.94, 149.92, 164.31, 185.43
ZFT110W	420	460	460	500	225	260	100000	79.5, 87.6, 95.8, 104.2, 114.8, 128.6, 147.2, 164.3, 173.9, 196.8, 215
ZFT160W	450	510	535	600	260	295	140000	93.7, 101.6, 111.3, 133.1, 162.8, 191.9, 210.8, 251
ZFT220W	460	600	610	680	260	295	200000	105.92, 116.05, 128.8, 155.4, 213.2, 246.1, 293, 365.5