

## 行走减速机 Travel Drive



### 工程机械 行走减速机

Travel Drive  
For Construction Machinery



行走减速机

#### 应用范围:

各种履带起重机、高空车、旋挖钻机、  
推土机及其它履带行走机械

### Travel Drive

Applications:  
Crawler cranes, cherry pickers, excavators,  
bulldozers and other crawler travel mechanism.

## 产品介绍 Special Features

行走减速机以其卓越的品质和性能，满足了各种条件、环境下使用，  
其明显的优点表现在 Super quality and performance of travel drives are suitable for all kinds of applications

Update Technology	· 引进国外先进技术	· 模块化设计	Modular Design
Micro Motion	· 产品微动性能好	· 承载能力强、可靠性好	High Load Capacity&Reliability
Compact Sturcture	· 结构紧凑	· 维护简单	Simple Maintenance

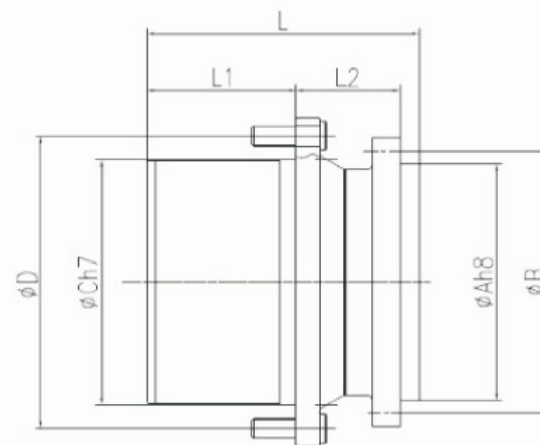
**株洲齿轮有限责任公司**  
ZHUSHOU GEAR CO., LTD.

ADD: No.119 Xinhua West Road, Zhuzhou, Hunan, China

电话: 0731-28496383

传真: 0731-28496358

Http://www.chinese-gear.com



型号	A	B	C	D	L1	L2	L	T2MAX	速比
ZFT7T	177.8/200	91	200/230	241.3/262	91	107/68	243	7000	51
ZFT9T	210	244	230	260	149	60	236	9000	16.5, 19.25, 24.2, 28.16, 33, 41, 38.3, 47.6, 55.27
ZFT13T	250	290	280	305	152	82	264	13000	16.27, 19.9, 22.62, 26.43, 32.14, 45.42, 37.57, 53.95
ZFT17T	250	290	280	305	152/174	82	264/286	17000	16.27, 19.9, 22.62, 26.43, 32.14, 45.42, 37.57, 53.95, 64.27, 77.95, 88.23, 102.62, 112.14, 124.2, 135.71, 150.51, 170.24
ZFT24T	250	290	280	305	190	82	302	24000	36.97, 44.7, 90.13, 102.6, 116.9, 120.5, 137.2, 169.86, 173.7, 193.3, 209.3, 221.1
ZFT26T	270	310	320	350	220	90	340	26000	30.36, 36.8, 42.87, 45.45, 50.52, 54.20, 62
ZFT34T	270	310	320	350	226	90	346	34000	30.36, 36.8, 42.87, 45.45, 50.52, 54.20, 62
ZFT34T (加锁型)	270	310	320	350	248	90	373	34000	30.36, 36.8, 42.87, 45.45, 50.52, 54.20, 62
ZFT36T	270	310	320	350	259	90	379	36000	32.57, 38.43, 47.21, 66.96, 79.36, 87.76, 100.02, 116.55, 131, 136.82, 161.26, 289
ZFT40T	330	370	350	400	244	108.5	377	40000	35.88, 41.04, 48.28, 59.13
ZFT50T	270	310	350	400	318	82	415	50000	36.8, 45.3, 87.59, 99.75, 125.66, 146.39, 155.94, 177.48
ZFT60T	330	370	370	410	284	114	423	60000	33.03, 39.41, 63.77, 76.55, 86.46, 94.60, 105.53, 111.93, 119.83, 139.86, 150.53, 159.89
ZFT80T	380	430	430	480	295	148	466	80000	61.28, 76.68, 79.15, 87.64, 98.97, 110.86, 126.94, 149.92, 164.31, 185.43
ZFT110T	420	460	460	500	165	305	492	110000	79.5, 87.6, 95.8, 104.2, 114.8, 128.6, 147.2, 164.3, 173.9, 196.8, 215
ZFT160T	450	510	535	600	347	168	545	160000	93.7, 101.6, 111.3, 133.1, 162.8, 191.9, 210.8, 251
ZFT160T (紧凑型)	340	400	445	495	345	171	546	160000	93.7, 101.6, 111.3, 133.1, 162.8, 191.9, 210.8, 251